

## Coroplast Aluminum Tapes

### Handling instruction

Adhesive tapes of the Coroplast ALU SE and Coroplast AWX series are approved in accordance with DIN 4102, building material class B1 (flame retardant) and class A2 (non-combustible). The products are subject to testing and observation by independent material testing organizations.

#### Application:

Coroplast pure aluminum adhesive tapes are used for sealing the seams of the aluminum-laminated insulating systems (glass or stone wool blankets) for conduits, air conditioning ducts, tanks and boilers in household or operational facilities as well as the shipping and offshore-industry (types Coroplast 930 ALU SE, 1510 AWX and 1530 AWX are approved by the German BG Verkehr/Schiffssicherheit).

#### Preparing the substrate:

The substrate has to be free of dust, grease and oil. It has to be dry and neatly cleaned; oxide-layers have to be removed. Don't cut insulating material to tight or with an overlap, cutting edges have to fit suitably, preferably aluminum to aluminum, avoid friction or stress within construction.

Temperatures:

#### a) Operating temperature

ALU SE series: -40 to +80 °C

AWX-Serie: -40 to +130 °C

#### b) Processing temperature

ALU SE series: optimal at +15 to +25 °C

AWX series: optimal at +10 to +25 °C

application also possible at sub-zero temperatures

Provided application at low temperatures, the tape has to be fixed thoroughly with pressure. If possible avoid storing the tapes in unheated rooms during cold season. Tapes, which have been stored in cold temperature, should remain in heated rooms for a minimum of one day.

#### Processing:

Unwind Coroplast aluminum tape for a section and remove the interliner (film or paper) by pulling on it rather than stressing or pulling on the aluminum (the aluminum foil should be kept even). Start fixing the tape and stick it central over the cutting edges. Optimum 50 mm contact area on each side. Subsequently fix the tape tight with the Coroplast. It is important to put enough pressure on the edges and on the end of the tape to get a permanent bonding.

If the insulation is damaged do not use short pieces of tape, use enough tape to wrap completely around in a circular fashion.

#### Advantages by using Coroplast spatula:

- › You get an entire and uniform bonding surface without bubbles and less folds – on stucco embossed aluminum as well.
- › By using the spatula less pressure is needed compared to using palm or fingers.
- › The pressure on the spatula edge is much higher in contrast using hand or towel. By this means the bonding of adhesive to surface is faster.
- › The solid processing with the Coroplast spatula ensured a long-lasting bonding of Coroplast aluminum tapes and a diffusion-tight insulation covering.



COROPLAST  
spatula

#### Please Note:

Coroplast aluminum tapes ensure a diffusion tight insulation, but they are not foreseen for mechanical fixing or holding purposes. Therefore the insulation system has to be fixed with binding wire after bonding the tape (conduits, pipes). The blankets have to be fixed around the air condition ducts with the appropriate mechanical fixing system (e.g. pins).

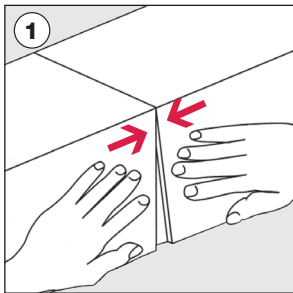
## Coroplast pure aluminum adhesive

Type	Thickness of aluminum foil $\mu\text{m}$	Building material class DIN 4102
930 ALU SE	25	B1*
910 ALU SE	30	B1
942 ALU SE	40	B1
944 ALU SE	50	B1
948	40	-
941	100	-
1530 AWX	25	B1/A2*
1510 AWX	30	B1*
1542 AWX	40	B1**
1544 AWX	50	according to UL 723
1560 AWX	30	B1
933 ALU Black	25	B2

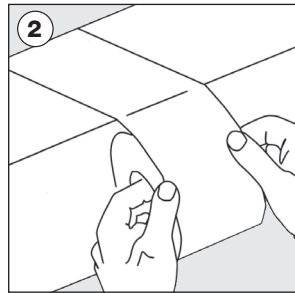
\* Approval mark of German BG Verkehr/Schiffssicherheit and Russian Register

\*\* VOC approval, emission classification A+

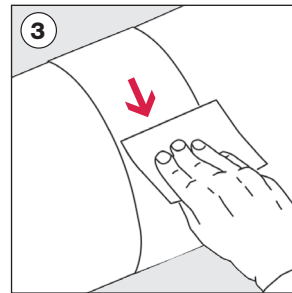
### Application for intersections and junction points:



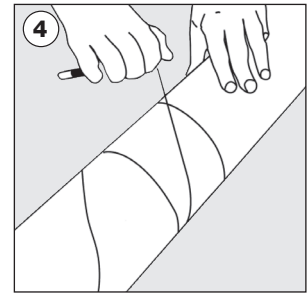
Cutting edges of insulating mats have to fit suitably and blankets have to be fixed with appropriate mechanical systems (pins)



Remove interliner and apply aluminum tape, keeping the seam in the middle of the tape, making sure to use enough material

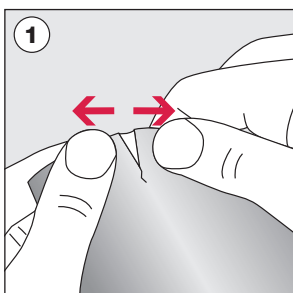


Fix the tape with the spatula, tape endings and edges with accurate pressure

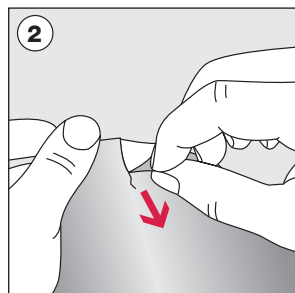


After application of Coroplast aluminum tapes the insulation material has to be fixed with binding wire (conduits)

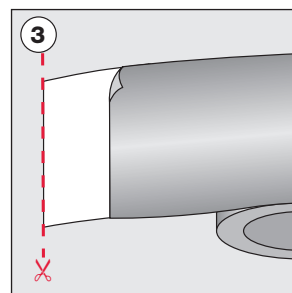
### Interliner removing instruction:



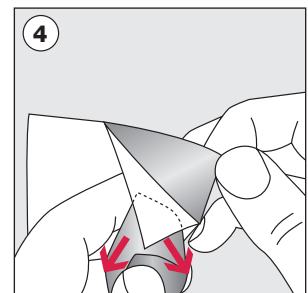
Pull the tape apart at the tape ending, so that the interliner overstretches and the tape tears laterally.



By overstretching the film results a "natural fingerlift" at the torn point. The interliner can be easily removed from the tape now.



For keeping a fingerlift, cut or tear the tape shorter than the interliner.



Alternatively a short adhesive tape strip can help to remove the interliner. To do this put the strip on the back of the interliner and remove the film by using the tack.

Our products are the result of thorough research. They are state of the art. To assist in the usefulness of a product, we give data and technical information to the best of our knowledge, but without any warranty or guarantee. This information shall be considered as average values and are not appropriate for a customer or supplier specification. The data and technical information contained herein do not constitute an agreement on the characteristics of the product. We expressly reserve the right to make technical modifications to all our products. Note: Before use, the suitability of the product for the specific application must be examined by the user. [www.coroplast-tape.com](http://www.coroplast-tape.com).